

17" x 11" ONE-FOLD BROCHURE


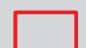


FOLDS DOWN TO
5.7" x 11" FINISH SIZE

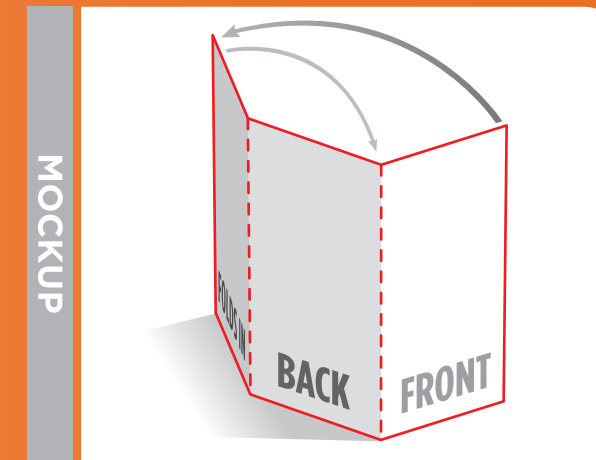
PANEL 3 / FOLDS IN

PANEL 6 / BACK

PANEL 1 / FRONT

TEMPLATE KEY

-  SAFETY AREA
-  TRIM / LIVE AREA
-  BLEED AREA
-  FOLD LINES



LBL
PRINTING

IF USING ILLUSTRATOR OR FREEHAND
CONVERT ALL TEXT TO PATHS/OUTLINES
EMBED ALL LINKED GRAPHICS

THIS TEMPLATE IS FOR REFERENCE ONLY.
DO NOT FLATTEN ONTO ARTWORK.

OUTSIDE

11"

17"